

GLASS LINING TECHNOLOGIES



Glass lined valves

email850P

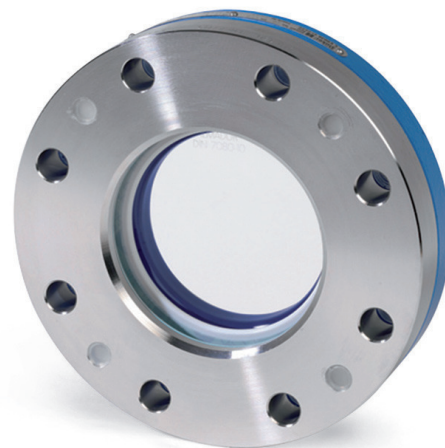
email800

email350

Glass lined valves... plane, scratch-resistant,

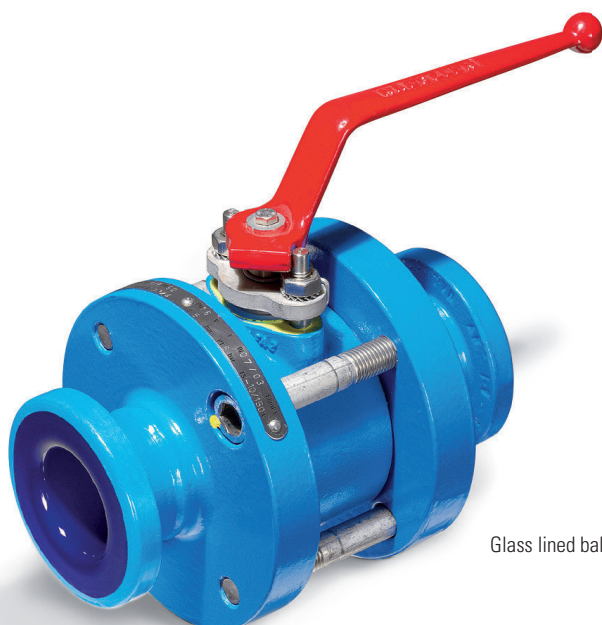
Our valves are approved for temperatures up to 180 °C and operating pressures of -1 up to +16 bar depending upon the type. All types can be delivered according to DIN or ANSI.

Our forged steel housings and components in fine cast steel or spheroidal graphite cast iron, Class GGG 40.3, respectively, take into consideration the high safety standards required in chemical plants. The smooth, scratch-resistant surfaces and the possibilities given for easy cleaning are further important criteria for best production results particularly in the pharmaceutical industry. The QHD (Quality Hygienic Design) confirms this.

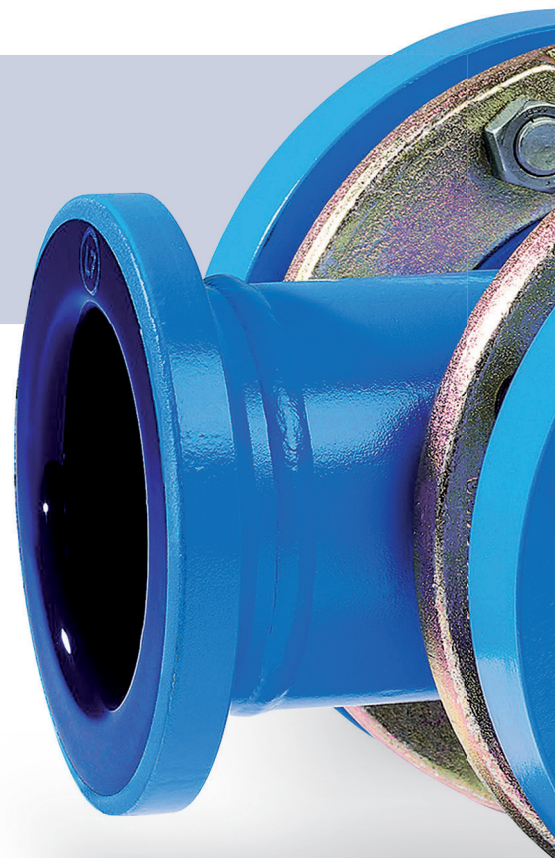


Glass lined flat sight glass

Ball valves	DN 25 and 50 (1" and 2")
Diaphragm valves	DN 25 up to 100 (1" up to 4")
Oblique-seat valves	DN 25 up to 100 (1" up to 4")
In-line sight glass	DN 25 up to 250 (1" up to 6")
Flat sight glass	DN 40 up to 200 (1½" up to 8")



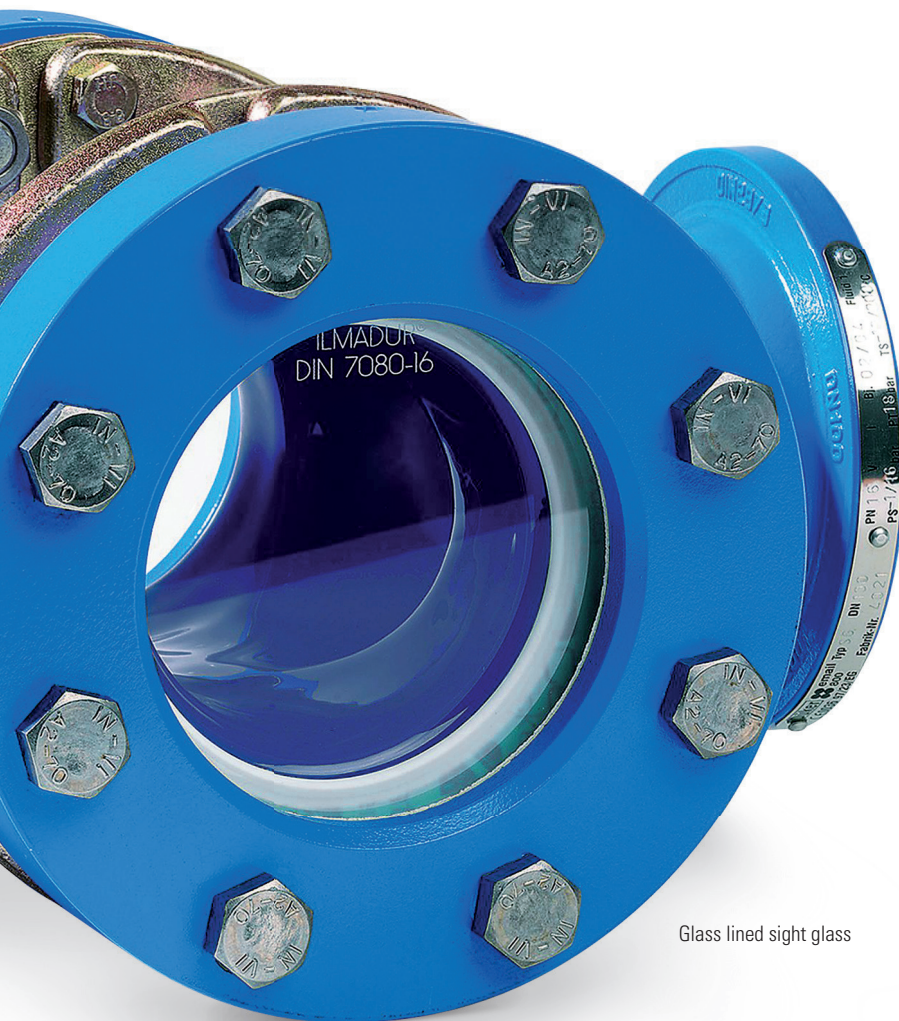
Glass lined ball valve



easy to clean



GMP Diaphragm valves: Head piece optional made of plastics or stainless steel. Sealing through PTFE-Protection shield with rubber back-up diaphragm



Glass lined sight glass





GLASS LINING TECHNOLOGIES



JOBGING FOUNDRY



FITTINGS AND VALVES



DRAINAGE TECHNOLOGY



ENGINEERING

Düker GmbH & Co. KGaA
Hauptstraße 39-41
D-63846 Laufach
Germany

Phone +49 6093 87-0
Fax +49 6093 87-246

Internet: www.dueker.de
E-Mail: info@dueker.de